

**Department of Transportation  
Federal Aviation Administration  
San Juan Air Traffic Control Tower  
Luis Muñoz Marín International Airport  
Carolina, Puerto Rico**

Issued: May 5, 2015

Effective: May 18, 2015

**SAN JUAN ATCT LETTER TO AIRMEN NO. 15-01**

**SUBJECT:** VFR TRANSITION ROUTES THROUGH THE SAN JUAN CLASS C AIRSPACE

**CANCELLATION:** May 18, 2017

**BACKGROUND:** VFR corridors have been established to provide a standard procedure to approach and depart Isla Grande Airport, or transition, through the San Juan Class C Airspace. Air Traffic may curtail and / or modify these procedures at any time. Comply with Air Traffic Control instructions and plan an alternate route. An operating Mode C transponder is required.

**TANGO TRANSITION**

- **PURPOSE:** Westbound transition through the San Juan Class C Airspace
- **ALTITUDE:** Maintain 2,000 feet MSL, maintain VFR
- **FREQUENCY:**
  - San Juan Approach 120.9
  - San Juan Tower 132.05
  - Isla Grande Tower 135.875
- **PROCEDURES:** Contact San Juan Approach at Fajardo / Luquillo
  
- **ROUTE DESCRIPTION:** From the vicinity of Fajardo Lighthouse / Luquillo Condominiums proceed to the Plaza Carolina Mall. From overhead the Plaza Carolina Mall, proceed directly to and overhead the San Juan Air Traffic Control Tower. Depart the tower on a heading 330 degrees until reaching the reef, approximately 2 miles offshore. Then enter left traffic for Isla Grande Airport. When Isla Grande Tower is closed, continue on heading 330 until the reef before proceeding westbound. From this point, entry may be made into the Isla Grande traffic pattern. If continuing westbound, further advisories can be requested from approach control on frequency 119.4. (Appendix 1& 5)

## RIVER TRANSITION

- PURPOSE: Eastbound transition through the San Juan Class C Airspace for:
  - Isla Grande departures
  - Over flying traffic from the west
- ALTITUDE: Maintain 1,500 feet MSL, maintain VFR
- FREQUENCY: Isla Grande Tower 135.875  
San Juan Tower 132.05  
San Juan Approach 119.4 (*over flights only*)
  
- ROUTE DESCRIPTION:
  - Isla Grande departures:
    - Runway 9 – Climb to 1,500 feet and fly heading 070 degrees until one mile offshore, north of the Conrad Condado Plaza Hotel, then proceed directly to and overhead the San Juan Air Traffic Control Tower, then proceed eastbound between the runways on heading 095 or as instructed by Air Traffic. (Appendix 2) *Note: Request the “River Transition” from Isla Grande Ground at least 15 minutes prior to taxi. When Isla Grande Tower is closed, remain clear of the San Juan Class C airspace and contact San Juan Tower on frequency 132.05.*
    - Runway 27 – Climb to 1,500 feet while making a right downwind departure until one mile offshore, north of the Conrad Condado Plaza Hotel, then proceed directly to and overhead the San Juan Air Traffic Control Tower, then proceed eastbound between the runways on heading 095 or as instructed by Air Traffic. (Appendix 2) *Note: Request the “River Transition” from Isla Grande Ground at least 15 minutes prior to taxi. When Isla Grande Tower is closed, remain clear of the San Juan Class C airspace and contact San Juan Tower on frequency 132.05.*
  
  - Overflights: Contact San Juan Approach on frequency 119.4 in the vicinity of La Plata (Dorado) River mouth and request the “River Transition”. From abeam the river’s mouth, and approximately one mile offshore, follow the shoreline until north of the Conrad Condado Plaza Hotel; then proceed directly to and overhead the San Juan Air Traffic Control Tower, then proceed eastbound between the runways on heading 095 or as instructed by Air Traffic. (Appendix 2 & 5)

## PLAZA TRANSITION

- PURPOSE: Eastbound transition through the San Juan Class C Airspace when the airport is on a Runway 26 / 28 operation for:
  - Isla Grande departures
  - Over flying traffic from the west
- ALTITUDE: Maintain 1,500 feet MSL, maintain VFR
- FREQUENCY: Isla Grande Tower 135.875  
San Juan Tower 132.05  
San Juan Approach 119.4 (*over flights only*)
  
- ROUTE DESCRIPTION:
  - Isla Grande departures:
    - Runway 9 – Climb to 1,500 feet and fly heading 070 degrees until one mile offshore, north of the Conrad Condado Plaza Hotel, then proceed directly to and overhead the San Juan Air Traffic Control Tower, and direct the Plaza Carolina Mall. Over Plaza Carolina Mall proceed eastbound on a heading 095. *Note: Request the “Plaza Transition” from Isla Grande Ground at least 15 minutes prior to taxi. When Isla Grande Tower is closed, remain clear of the San Juan Class C airspace and contact San Juan Tower on frequency 132.05. (Appendix 3)*
    - Runway 27 – Climb to 1,500 feet while making a right downwind departure until one mile offshore, north of the Conrad Condado Plaza Hotel, then proceed directly to and overhead the San Juan Air Traffic Control Tower, and direct the Plaza Carolina Mall. Over Plaza Carolina Mall proceed eastbound on a heading 095. (Appendix 3) *Note: Request the “Plaza Transition” from Isla Grande Ground at least 15 minutes prior to taxi. When Isla Grande Tower is closed, remain clear of the San Juan Class C airspace and contact San Juan Tower on frequency 132.05.*
  - Overflights: Contact San Juan Approach on frequency 119.4 in the vicinity of La Plata (Dorado) River mouth and request the “Plaza Transition”. From abeam the river’s mouth, and approximately one mile offshore, follow the shoreline until north of the Conrad Condado Plaza Hotel; then proceed along the shoreline until abeam the San Juan Air Traffic Control Tower, then overhead the Control Tower, and direct the Plaza Carolina Mall. (Appendix 3& 5)

### LOW OFFSHORE TRANSITION

- PURPOSE: West / East bound transition through the San Juan Class C Airspace
- ALTITUDE: Maintain 500 feet MSL, maintain VFR
- FREQUENCY: San Juan Approach 120.9 (*inbound from the east only*)  
San Juan Tower 132.05  
Isla Grande Tower 135.875
- ROUTE DESCRIPTION: VFR aircraft flying westbound or landing SIG Airport will cross the Loiza River mouth at or below 500 feet and fly ½ mile offshore. VFR aircraft flying eastbound or departing SIG Airport will fly at or below 500 feet along the shoreline. (Appendix 4 & 5)

### BUOY TRANSITION

- PURPOSE: West/East bound transition through the San Juan Class C Airspace when SJU Rwy 8 is closed.
- ALTITUDE: Maintain 1000 feet MSL, maintain VFR
- FREQUENCY: San Juan Tower 132.05  
San Juan Approach 120.9 (*when transferred by SJUT*)

#### When San Juan airport RWY 8/26 is Closed;

Departing Runway 9 or Runway 27, proceed eastbound along the northern shoreline climbing to 1000 feet. From abeam the Condado Plaza Hotel fly two NM north of the shoreline, then continue eastbound. Expect further instructions from ATC. (Appendix 4 & 5)

John Melecio  
Air Traffic Manager  
San Juan ATCT

### Appendix 1

## SAN JUAN ATCT LETTER TO AIRMEN NO. 15-01

### VFR TRANSITION ROUTES THROUGH THE SAN JUAN CLASS C AIRSPACE

#### TANGO TRANSITION



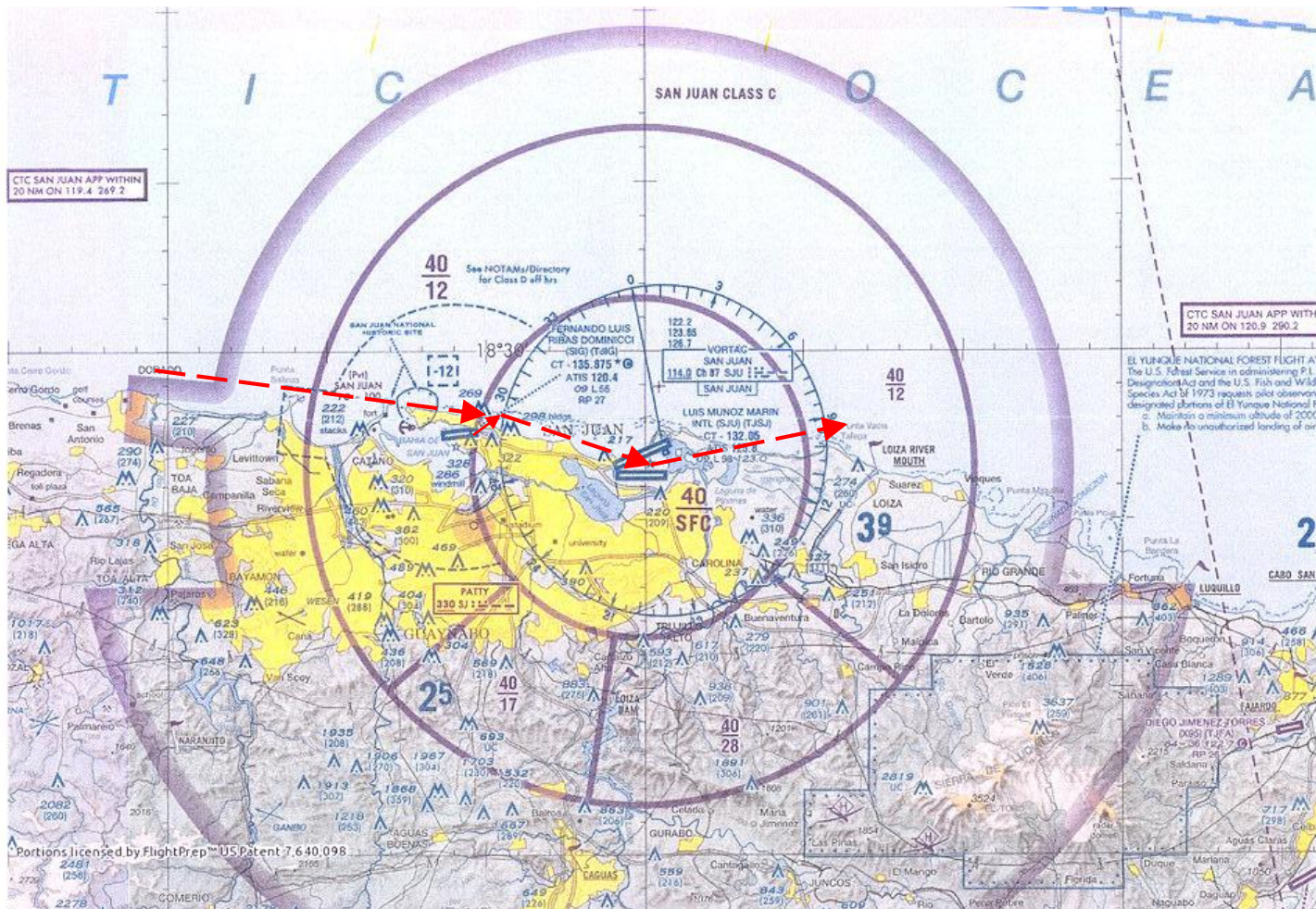
*\*For illustration purposes only.*

Appendix 2

SAN JUAN ATCT LETTER TO AIRMEN NO. 15-01

VFR TRANSITION ROUTES THROUGH THE SAN JUAN CLASS C AIRSPACE

RIVER TRANSITION



\*For illustration purposes only.

### Appendix 3

## SAN JUAN ATCT LETTER TO AIRMEN NO. 15-01

### VFR TRANSITION ROUTES THROUGH THE SAN JUAN CLASS C AIRSPACE

#### PLAZA TRANSITION



*\*For illustration purposes only.*

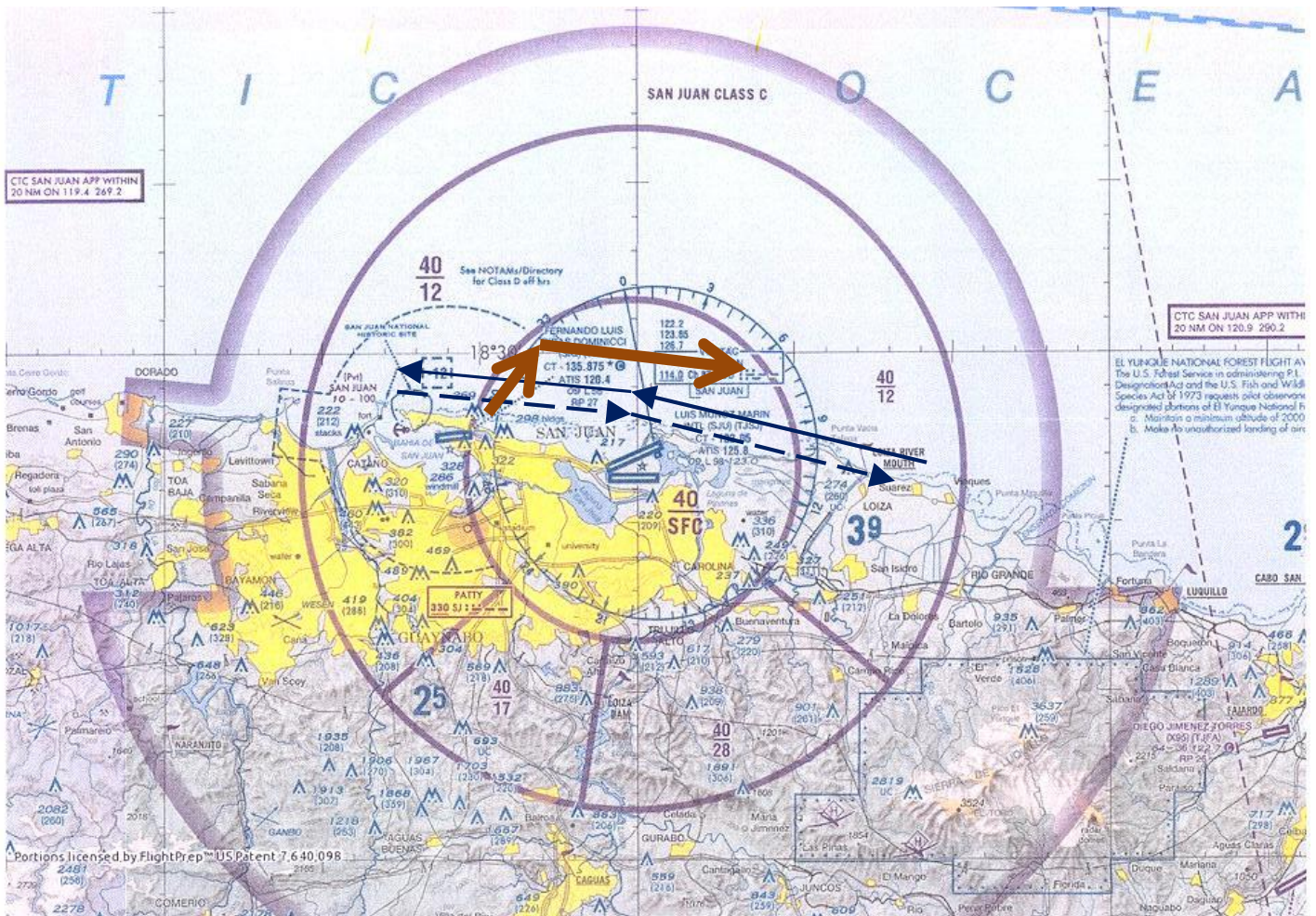
### Appendix 4

## SAN JUAN ATCT LETTER TO AIRMEN NO. 15-01

### VFR TRANSITION ROUTES THROUGH THE SAN JUAN CLASS C AIRSPACE

#### LOW OFFSHORE TRANSITION

#### BOUY TRANSITION



*\*For illustration purposes only.*

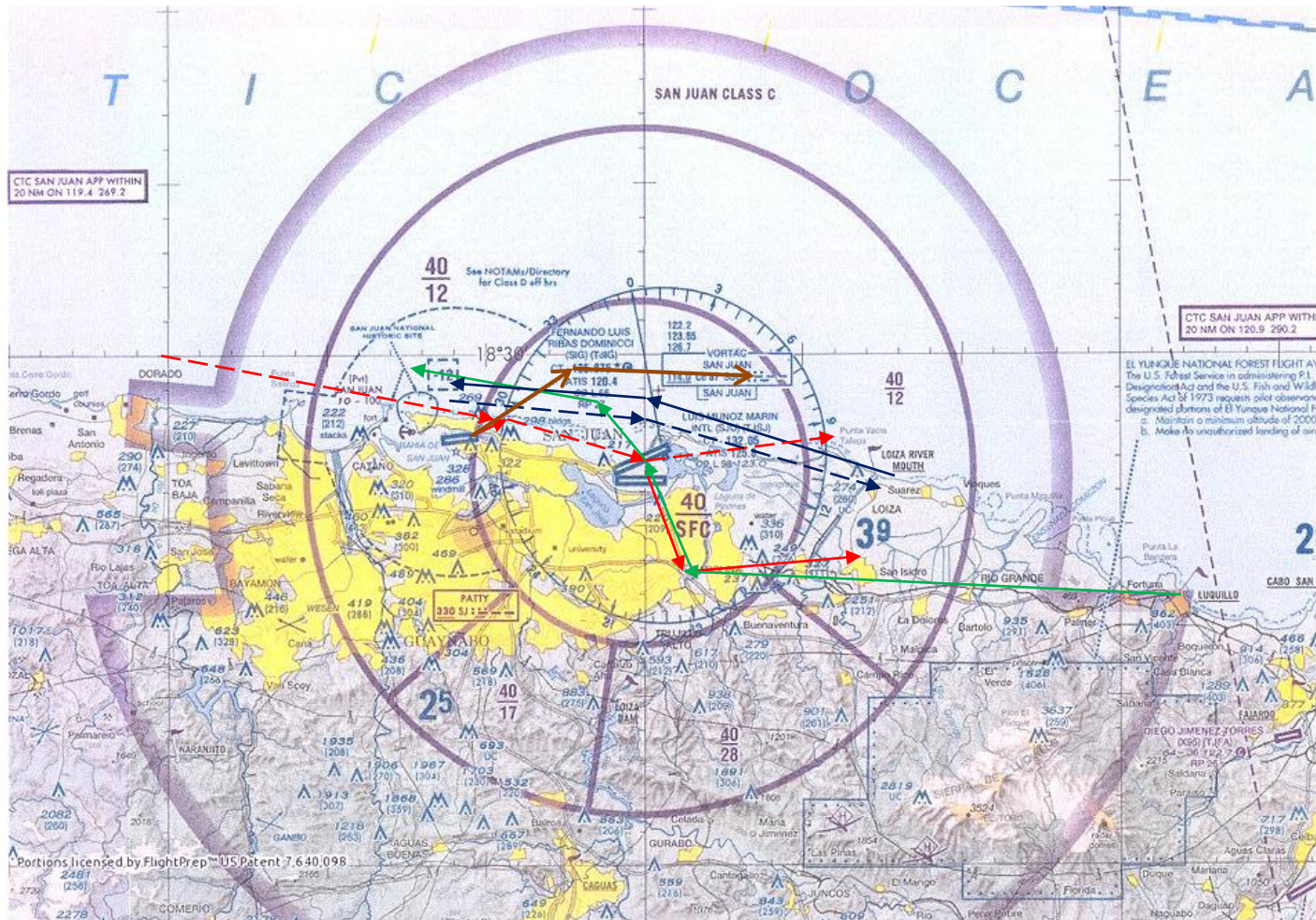


Appendix 5

SAN JUAN ATCT LETTER TO AIRMEN NO. 15-01

VFR TRANSITION ROUTES THROUGH THE SAN JUAN CLASS C AIRSPACE

TRANSITIONS



- TANGO TRANSITION
- - - - - RIVER TRANSITION
- PLAZA TRANSITION
- LOW OFFSHORE WESTBOUND
- - - - - LOW OFFSHORE EASTBOUND
- BOUY TRANSITION

*\*For illustration purposes only.*